

Cryogenic Temperature Controller

Model 44

The Model 44 cryogenic temperature controllers are the first instruments in their class to extend operation to ultra-low temperature providing robust support for He3 refrigerators at a very cost-effective price.

The Model 44 has four multi-purpose inputs. Each input is capable of temperature measurement to below 100mK by using a sophisticated 100 μ V ratiometric resistance bridge. For general-purpose thermometry applications, the inputs support a wide variety of standard sensors.

The dual-output control loop circuits features power levels as high as 50W and as low as 50mW full-scale in order to support ultra-low temperature operation.

Cryo-con's Model 44 are the first temperature controllers to incorporate Ethernet connectivity which adds a new dimension of flexibility to industrial and laboratory applications.



Major highlights of the Model 44:

- **Maximum flexibility:** Four multipurpose input channels support Diode, Platinum RTD and virtually all cryogenic NTC resistive temperature sensors.
- **Operation from 60mK to over 1020K** with appropriate sensor.
- **Constant-Voltage, AC excitation** extends the useful temperature range of resistive sensors
- **Unique synchronous filter** improves control accuracy and stability in cryocooler based systems.
- **Dual loop control.** Loop #1: 50-Watt, four-range. Loop #2: 10-Watt, two-range.
- **Fail-safe cryostat protection** features protect user equipment from damage.
- **Four optically-coupled digital outputs** that can be used to control external equipment.
- **10/100 MBPS Ethernet interface** implements a remote command language in addition to an embedded web server and e-mail.
- **Remote interfaces** include Ethernet, RS-232 and IEEE-488.2 (GPIB). LabView™ drivers available.



Input Flexibility: The Model 44 has **four sensor inputs**. Each input can be easily configured to support virtually any type of cryogenic thermometer. Configuration is performed from the instrument's front panel or a remote interface.

Silicon Diode sensors from Cryo-con® or any other manufacturer are directly supported over their full 1.4 to 500K range using built-in calibration curves and sensor data. Plus, non-volatile Flash memory is available for several custom or calibrated sensors.

A unique feature of the Model 44 is the use of a ratiometric AC resistance bridge technique to measure Positive Temperature Coefficient (PTC) resistor sensors including **Platinum** and **Rhodium-Iron** RTDs. This significantly reduces low frequency noise and drift to provide rock-solid measurements.

Platinum RTD sensors use a built-in DIN standard for temperatures from 70K to 1020K and extends it for cryogenic use. Operation to 14K is possible with user supplied curves.

The Model 44 provides robust support for the Negative Temperature Coefficient (NTC) sensors commonly used by cryogenic applications. They include **Ruthenium-oxide, Carbon-Glass, Cernox™, Carbon Ceramic, Germanium** and several others. Since these sensors have a negative temperature coefficient, the use of a constant-voltage measurement method will reduce, rather than increase, power dissipation in the sensor as temperature decreases. By maintaining the lowest possible power level, sensor self-heating is minimized and useful temperature range is greatly increased.

An additional advantage to constant-voltage excitation is that NTC resistors lose sensitivity in the upper part of their range. By auto-ranging excitation current to maintain a constant voltage, sensitivity and noise immunity in that range is greatly improved.

Sensor excitation used with all resistor sensors is a 3.25Hz bipolar square wave. This effectively cancels thermal EMF induced offset errors that sometimes occur in cryogenic systems.

The excitation source in the Model 44 is continuously variable so there are no significant steps in sensor self-heating.

NTC Sensor Resistance Ranges		
Voltage Bias	Min. Resistance	Max. Resistance
100mV	40Ω	1.0MΩ
10.0mV	4.0Ω	1.0MΩ
1.0mV	1.0Ω	333KΩ
100μV	1.0Ω	33KΩ

Model 44 Supported Sensors		
	Temperature Range	Example Sensors
Diode	1.4 - 500K	Cryo-con S900 SI-440, 430, 410. Lakeshore DT-670, 470
Platinum RTD	14 - 1200K	Cryo-con CP-100 Cryo-con GP-100 Cryo-con XP-100 Cryo-con XP-1K
Rhodium-Iron	1.4 - 800K	Oxford PHZ 0002
Germanium	<100mK - 100K	Lakeshore GR-200A
Carbon Glass™	1.4 - 325K	Lakeshore CGR-1-500
Cernox™	100mK - 325K	Lakeshore, all types
Carbon-Ceramic	100mK - 300K	TMi-A1
Ruthenium Oxide	50mK - 200K	Cryo-con R400 Cryo-con R500

Measurement accuracy is obtained by using 24-bit analog to digital conversion at a minimum sample rate of 15Hz per channel and is further enhanced by extensive use of Digital Signal Processing (DSP). Conversion of a sensor measurement into temperature is performed by using a Cubic Spline interpolation algorithm. In addition to providing higher accuracy than conventional linear interpolation, the Spline function eliminates discontinuities during temperature ramps or sweeps by ensuring that the first and second derivatives are continuous.

Input Specifications				
	Diode Sensors	PTC Resistor Sensors	NTC Resistor Sensors Constant-Current mode	NTC resistor sensors Constant-Voltage mode
Input Configuration	Constant-Current, DC	Passive AC Resistance Bridge	Constant-Current DC Resistance Bridge	Constant-Voltage AC Resistance Bridge
Ranges	2.25V	390Ω, 3.9KΩ, 39KΩ	225KΩ	1.0KΩ, 10KΩ, 100KΩ, 1.0MegΩ Auto or range-hold
Accuracy: % of Rdg + % of Range	0.004% + 80μV	0.01% + 0.0005%	0.005% + 25Ω	4 to 30K: 0.05% + 0.05% 0.04 to 1M: 0.15% + 0.15%
Resolution: % of Range	10μV	0.0003%	0.00004%	0.0003%
Excitation Current	10μA DC	1.0mA, 100μA, 10μA Max.	10μA DC	2.5mA to 2.0nA continuously variable, auto-ranged

Sensor Curves: The Model 44 includes built-in curves that support most industry standard temperature sensors. Additionally, **eight user calibration curves** are available for custom or calibrated sensors. Each user curve may have up to 200 entries and may be entered from the front panel, or transferred via any of the available remote interfaces.

New calibration curves may be generated using the **CalGen®** feature to fit any existing Diode, Platinum or NTC resistor calibration curve at up to three user specified temperature points. This provides an easy and effective method for obtaining higher accuracy temperature measurements without expensive sensor calibrations.

The Model 44 continuously tracks temperature history, independently on each input channel and provides a statistical summary that indicates the channel's minimum, maximum, average and standard deviation. Also shown are the slope and the offset of the best-fit straight line of temperature history data.

Dual Control Loops: The Loop #1 heater output is a linear, low noise RFI filtered current source that can provide up to 1.0 Ampere into 50Ω or 25Ω resistive loads. Four full-scale ranges are available in decade increments down to 50mW.

The Loop #2 heater output has two output ranges of 10-Watts and 1.0-Watt full-scale into a 50Ω load.

Loop #1 and Loop #2 heaters are completely independent and either heater can be controlled by any sensor input.

Control modes are **Manual, PID, Ramp** and **PID Table**. The industry standard Proportional-Integral-Derivative or PID control loop is implemented as a DSP algorithm and is enhanced to minimize set-point overshoot and differentiator noise.



The direction of the control loop can be easily reversed to accommodate thermoelectric type coolers where power is applied to cool rather than heat.

The field proven **Autotune** function of the Model 44 involves the use of a specific output waveform to first develop a process model, then generate the optimum P, I and D coefficients.

Cryogenic systems often require stable control over a wide range of temperatures. Here, control loop tuning parameters can be significantly different at different temperatures. For this reason, the Model 44 offers **PID tables** that store optimum tuning parameters and heater range vs. setpoint temperature. Six PID tables are available. Each contains PID and heater range settings for up to 16 temperature setpoints.

The Model 44 will perform a **temperature ramp** function using a specified maximum ramp rate and target setpoint. Once placed in a ramping control mode, a ramp is initiated by changing the setpoint. The unit will then progress to the new setpoint at the selected ramp rate. Upon reaching the new setpoint, ramp mode will be terminated and standard PID type regulation will be performed.

Cryostat Protection: Damage to a cryostat or critical sample is a serious problem with any cryogenic system. The Model 44 implements the most robust set of protection features in the industry.

The **Over Temperature Disconnect** feature will disable the heater if an over temperature condition exists on any selected input channel. A fail-safe mechanical relay is used to disconnect the controller's heater thereby ensuring that the user's equipment is always protected.

The **Maximum Setpoint** feature is used to prevent the user from inadvertently entering a higher setpoint than the equipment can tolerate.

Setting the **Maximum Power Limit** will ensure that the controller can never output a heater power above the set limit.

Alarms: The Model 44 supports visual, remote and audible alarms. Each may be independently programmed to assert or clear based on a high or low temperature condition or a detected sensor fault.

Latched alarms are asserted on an alarm condition and will remain asserted until cleared by the user.

Digital Outputs: The Model 44 has four optically coupled digital outputs. These can be used to control a refrigerator system or other equipment by providing programming signals to an industrial Programmable Logic Controller (PLC).

Output signals are asserted or cleared based on the temperature reading of selected input channels. Each output has a high and low set-point that may be enabled from the front panel or a remote interface. Further, the signals can be manually asserted ON or OFF.

Lowest Noise: The Model 44 was designed for use in extremely low noise environments that cryogenic systems often require. Linear-mode power supplies are used throughout and sensor excitation current sources are not multiplexed.

Electrical isolation is used to prevent noise pickup by sensitive analog circuits and to eliminate ground loops.

The enclosure of the Model 44 is all Aluminum with wide conductive overlaps on all mating metal surfaces so that radiated RFI noise is virtually eliminated. An effective shielding and grounding scheme further allows the user to minimize both conducted and radiated noise.

Easy to Use: The Model 44's user interface consists of a large, bright Vacuum Fluorescent display and a full, 20-key keypad. All features and functions of the instrument can be accessed via this simple and intuitive menu driven interface.

Accessing primary instrument functions, such as display units and heater setpoint, require only a single key press. More complex features can be accessed by scrolling through short menus.

Temperature displays are autoranged to show the most number of significant digits. Built-in filters can be used to smooth temperature data and display resolution can be selected for optimum viewing. Units of K, °C, °F, Volts or Ohms may be selected.

Power switch is on the front panel for easy access.

Remote Control: Standard Remote Interfaces include Ethernet, RS-232 and IEEE-488(GPIB). All interfaces are electrically isolated to prevent ground loops.

The Model 44 connects directly to any **Ethernet Local-Area-Network (LAN)** to make measurements easily and economically. Connection to any existing LAN allows stable, precise, cost-effective measurements in laboratory or industrial environments as well as in remote, distributed data acquisition systems.

Using the Ethernet **HTTP** protocol, the instrument's **embedded web server** allows the instrument to be viewed and configured from any web browser.

Using the Ethernet **SMTP** protocol, the controller will send e-mail based on selected alarm conditions. E-mail is configured by using the web page interface.

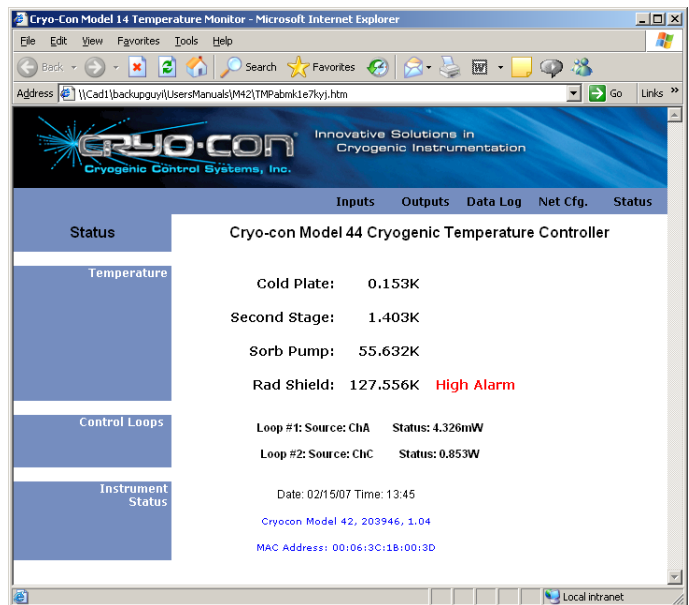
The **TCP/IP data port server** brings fast Ethernet connectivity to all common data acquisition software programs including LabView™.

TCP/IP protocol is used to implement an ASCII text based command language like those commonly used with IEEE-488 or RS-232 interfaces. This is the primary way that user software interfaces to the instrument. The remote command language is SCPI compliant according to the IEEE-488.2 specification.

With Ethernet connectivity, the user has complete control of the instrument by using any web-enabled device from desktop PC to a wireless Pocket PC™. It is platform and operating system independent, working equally well with Windows, Linux or Macintosh based computers. There are no expensive cards or cables and, best of all, no confusing configuration requirements.

Utility Software: Utility software is provided that connects any Windows based personal computer to the Model 44 via any of its remote interfaces. This software provides a graphical control panel that greatly simplifies instrument setup and configuration. Features include:

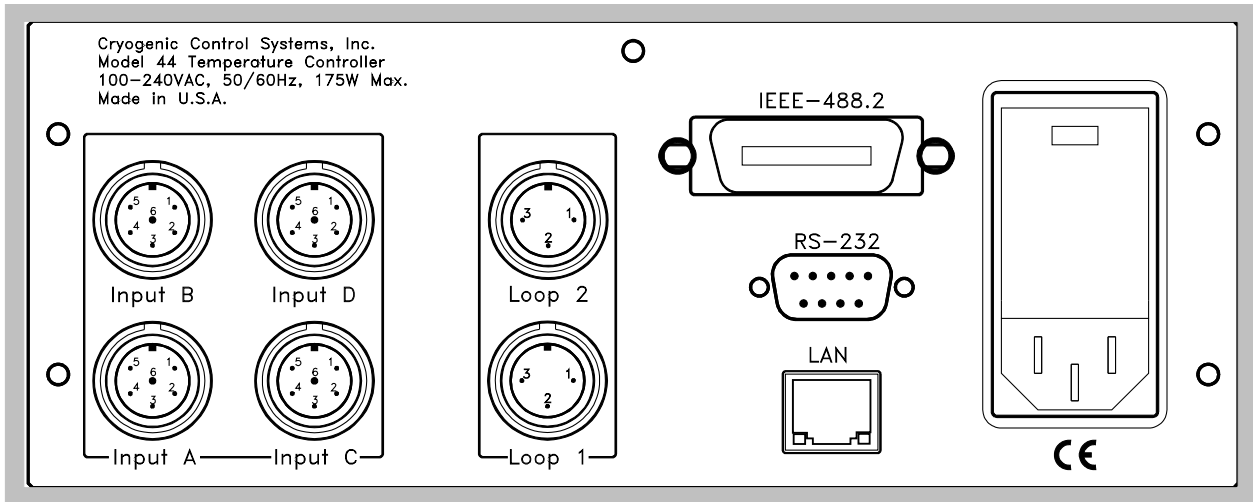
- Continuous strip-chart monitoring of all inputs and outputs.
- Downloading, uploading, viewing and editing of sensor calibration curves and PID tables. Most file formats are directly supported and can be easily converted to Cryo-con's standard format.
- Downloading command script files in XML format.
- Automates instrument calibration.



LabView™: LabView™ drivers are supplied for the Ethernet TCP/IP, IEEE-488 and RS-232 interfaces. Conversion of LabView™ programs from IEEE-488 or RS-232 to Ethernet TCP/IP is as easy as changing the interface setting in the open VI.

Ethernet API: An Applications Program Interface (API) package is supplied that facilitates communication with the instrument using the TCP/IP interface. It is supplied as a Microsoft Windows™ DLL that is easily linked with C, C++ or Basic programs.

Rear Panel Connections



- **Input Connectors:** DIN-6 recepticals provide 4-wire measurement connection plus shield.
- **Loop #1:** Heater output, DIN-3 receptacle.
- **Loop #2:** Heater and Digital Output connection, DIN-8 receptacle.
- **Ethernet:** RJ-45 with LAN activity indicator LEDs.
- **IEEE-488:** Standard IEEE-488.2 (GPIB) connector.
- **RS-232:** Null-modem connector (DB-9, pins).
- **AC Power:** RFI filtered Power Entry Module including fuse drawer and line voltage selector.

Ordering Information

Product	Description
Model 44	Controller with four multi-function sensor input channels and two control loops.
	Controllers include: User's Manual, Cryo-con software CD, Two or Four input connectors, two heater connectors, a detachable line cord and a certificate of calibration.

Options	Description
-100	Configured for 90 - 100VAC with detachable USA power cord.
-110	Configured for 110 - 120VAC with detachable USA power cord.
-220	Configured for 220VAC with detachable universal Euro line cord.
-240	Configured for 240VAC with detachable universal Euro line cord.

Accessories	Description
4042-030	8' Heater cable, two wire, wired to DIN-3 connector.
4042-040	8' Sensor cable, four wire, wired to DIN-6 connector.
4034-031	Two instrument shelf rack mount kit
4034-032	One instrument shelf rack mount kit

Specifications

User Interface

Display Type: 20 x 2 character VFD, 9mm character height.
Number of Inputs Displayed: One to Four.
Keypad: Sealed Silicon Rubber.
Temperature Display: Six significant digits, auto-ranged.
Display Update Rate: 0.5 Seconds.
Display Units: K, C, F or native sensor units.
Display Resolution: User selectable to seven significant digits.

Input Channels

There are four input channels, each of which may be independently configured for any of the supported sensor types.

Sensor Connection: 4-wire differential. DIN-6 Connector.
Sensor Types: See Supported Sensor Table.
Sensor Selection: Front Panel or remote interface.
Input Configurations: See input specifications table.
Bridge Modes: Passive, Constant-Current, Constant-Voltage.
Bridge type: Ratiometric resistance ½-bridge. DC coupled.
AC Excitation Frequency: 3.25Hz bipolar square wave.
Sample Rate: 15Hz per channel.
Digital Resolution: 24 bits.
Measurement Accuracy: See input specifications table.
Measurement Drift: 15ppm/°C. 25ppm/°C in the Meg-ohm resistance range.
Isolation: Input channel circuits are electrically isolated from all other internal circuitry.
Measurement Filter: 0.5, 1, 2, 4, 8, 16, 32 and 64 Seconds.
Calibration Curves: Built-in curves for industry standard sensors plus eight user curves with up to 200 entries each. Interpolation is performed using a Cubic Spline.
CalGen®: Calibration curve generator fits any Diode or resistor sensor curve at 1, 2 or 3 user specified temperature points.

Control Outputs

Number of Independent Control Loops: Two.
Control Input: Any sensor input.
Loop Update Rate: 15Hz per loop.
Isolation: Control loop circuitry is referenced to chassis ground.
Control Type: PID table, Enhanced PID, Ramp or Manual.
Autotune: Minimum bandwidth PID loop design.
PID Tables: Six user PID tables available for storage of setpoint and heater range vs. PID and heater range. 16 entries/table.
Set-point Accuracy: Six+ significant digits.
Fault Monitors: Control loops are disconnected upon detection of a control sensor fault or excessive internal temperature.
Over Temperature Disconnect: Heater may be relay disconnected from user equipment when a specified temperature is exceeded on any selected input.

Loop #1 Primary Heater Output

Type: 50-Watt short circuit protected linear current source. Maximum compliance is selectable at 25V or 50V.
Ranges: Four output ranges of 1.0A, 333mA, 100mA and 33mA full-scale, which correspond to 50W, 5.0W, 0.5W and 50mW when used with a 50Ω load.
Load Resistance: Selectable at 25Ω or 50Ω.
Minimum Load: 10Ω in 25W setting, 40Ω in 50W setting.
Resolution: 1.0ppm of full-scale power (20 bits).
Readbacks: Heater output power, Heatsink temperature.

Loop #2 Heater Output

Type: 10-Watt, short circuit protected linear current source. Maximum compliance is 25V.
Ranges: Two output ranges of 450mA and 140mA full-scale, which correspond to 10W and 1.0W into a 50Ω load.
Load Resistance: 50Ω for 10-Watt output.
Minimum Load: 10Ω.
Resolution: 1.0ppm of full-scale power (20 bits).
Readbacks: Heater output power, Heatsink temperature.

Status Outputs

Digital Outputs: Four independent, optically-coupled discrete outputs are available to control external equipment.
Audible and Visual Alarms: Independent audible remote and visual alarms.
Status reported via Remote Interface: Digital Output status, Alarm status, Sensor fault, Heater over temperature fault.

Remote Interfaces

Remote interfaces are electrically isolated to prevent ground loops.
Ethernet: Connects to any 10/100 MBPS Ethernet Local Area Network. Electrically isolated. **TCP/IP** provides remote control by using an ASCII command language. **HTTP** provides built-in web server. **SMTP** sends e-mail based on alarm conditions.
RS-232: Serial port is an RS-232 standard null modem. Data rates are 9600, 19,200, 38,400 and 57,200 Baud.
IEEE-488 (GPIB): Full IEEE-488.2 compliant.
Programming Language: IEEE-488.2 SCPI compatible.
LabVIEW™ drivers available for all interfaces.

Firmware

Instrument firmware can be updated in the field via the Ethernet connection. Firmware updates are available on the Internet.

User Setups

Four User Setups are available that save and restore the complete configuration of the instrument.

General

Ambient Temperature: 25°C ± 5°C for specified accuracy.
Mechanical: 8.5"W x 3.5"H x 12"D. One half-width 2U rack. Instrument bail standard, rack mount kit optional.
Weight: 9 Lbs.
Power Requirement: 100, 120, 220 or 240VAC +5% -10%. 50 or 60Hz, 150VA.
Conformity: European CE certified.
Calibration: NIST traceable.

Contact Information

Cryogenic Control Systems, Inc.
PO Box 7012
Rancho Santa Fe, CA 92067
Tel: (858) 756-3900 Fax: (858) 759-3515
E-mail: sales@cryocon.com Web: www.cryocon.com

CalGen® and Cryo-Con® are registered trademarks of Cryogenic Control Systems, Inc. All other product and company names are trademarks or trade names of their respective companies.

©Cryogenic Control Systems, Inc. 2009, M42d0209
Specifications subject to change without notice